

ZHK 型双杆切断蝶阀

Shut-off Valves Type ZHK Two Lever Valves



ZHK型双杆切断蝶阀

Shut-off Valves Type ZHK

双杆切断蝶阀设计特点：

- 焊接式结构
- 打开阀门的初始阶段及关闭阀门的最后阶段，阀板平行于阀座运动，阀板与阀座间实现无摩擦移动
- 多种组合方式的阀座
- 特殊的联杆机构提供的压力作用在阀板的中心
- 轴杆靠近阀中心线布置
- 驱动杆与导向杆几乎等长
- 紧凑设计
- 根据操作条件选择材料
- 阀门的驱动可根据用户的要求设计(如：电动、液动、气动、手动等)
- 压力等级可达PN 10
- 操作温度可达600 °C (1100 °F)
- 公称直径可达4000 mm (160 inch)
- 其它尺寸或操作条件按订货要求

设计保证：

- 阀板在关闭和打开时平行于阀座无摩擦，阀座磨损小
- 在高温条件下，连杆系统不会被卡死，这是由于驱动杆与导向杆几乎等长
- 通过提供自动调整功能的阀板中心连接点即压力点压紧阀座
- 由于驱动轴靠近阀门中心线，所以驱动轴只需要很小的扭矩

特别适合于极端的操作条件如：

- 在高压下打开和关闭
- 操作频率高
- 不同的操作温度
- 工作温度频繁变化
- 可关断清洁和多尘的空气及气体介质
- 开闭时间短暂

Design Features of Two Lever Valves:

- Fabricated construction
- In the initial stage of opening and final stage of closing, the disc moves parallel to the body seat providing a friction-free motion
- Various seat arrangements
- A special lever mechanism connects to, and applies pressure on the centre of the disc
- The shaft is arranged close to the valve centreline
- Operating lever and guide levers are of nearly the same length
- Compact design
- Materials according to operating conditions
- Valve actuation in accordance with customer's requirements (man./electr./hydr./pneum.)
- Pressure rating up to PN 10
- Operating temperatures up to 600 °C (1100 °F)
- Nominal diameters up to 4000 mm (160 inch)
- Other sizes or operating conditions on request

This Design Guarantees:

- Low wear at the seats due to parallel and friction-free closing and opening of the valve disc
- No jamming of lever system not even at higher temperatures, due to nearly the same length of drive lever and guide levers
- Seat tightness by central disc connection/pressure point providing self-aligning feature
- Low torque requirement at the drive shaft due to close proximity to the valve centreline

Especially Suitable for Extreme Operating Conditions, Such as:

- High operating pressure in open as well as in closed position
- High frequency of operation
- Temperature differences
- Temperature fluctuations
- Shut-off of clean and dust laden air and gas media
- Short closing and opening time

双杆切断蝶阀

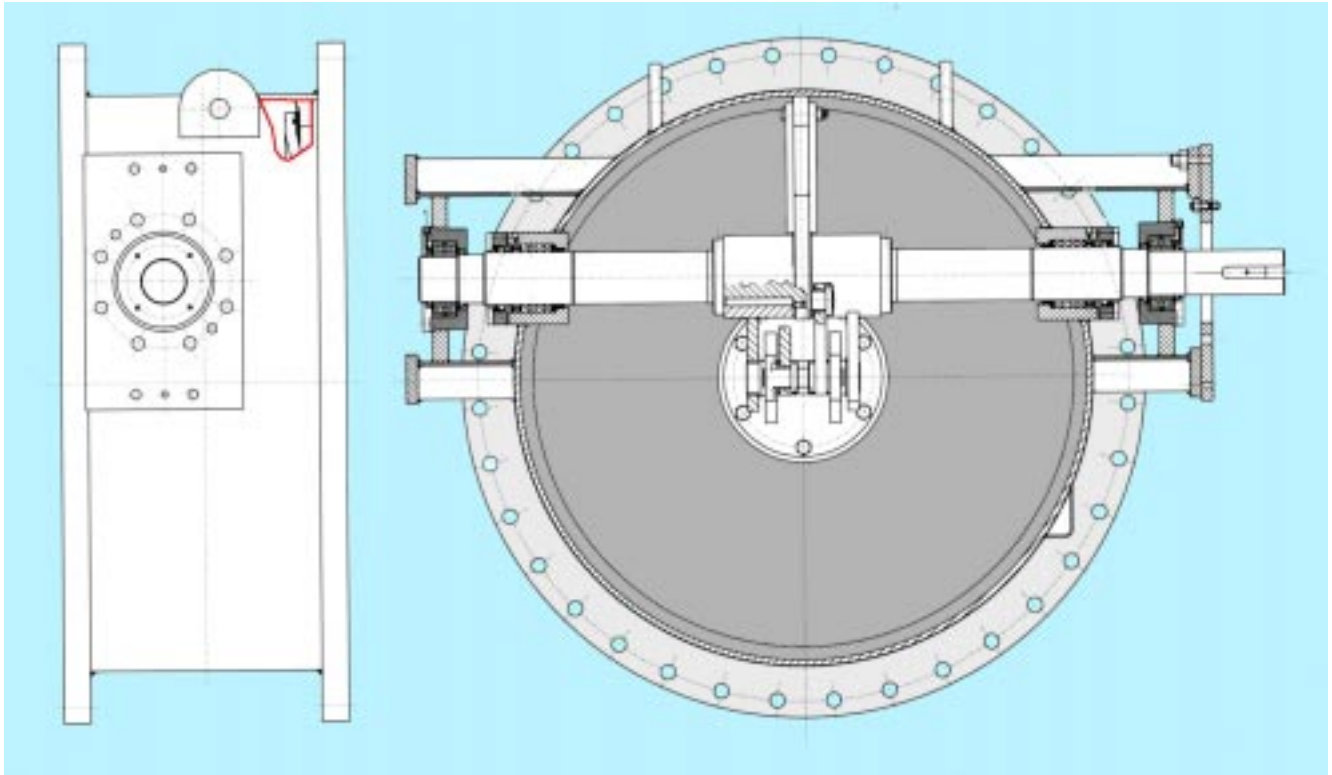
Two Lever Valves

双杆切断蝶阀的典型应用：

- 适用于所有清洁和多尘的空气及气体介质

Typical Service Applications of Two Lever Valves:

- For all clean and dust laden air and gas media

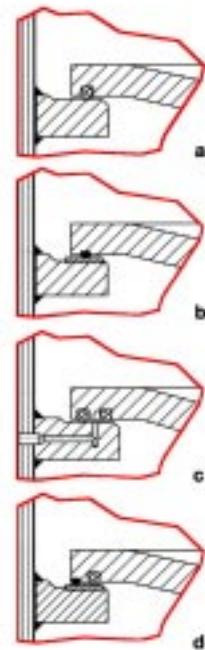
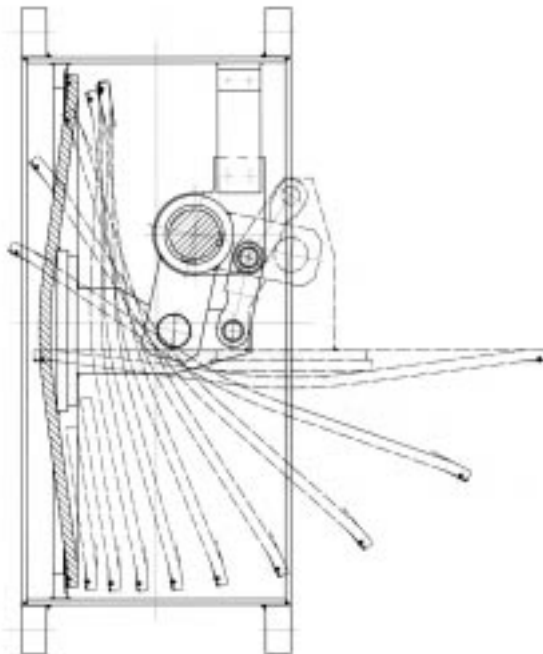


适用于各种应用的密封形式：

- a) 软密封
- b) 金属密封
- c) 带有气体净化室的双软密封
- d) 金属和软密封

Seat Versions for Various Applications:

- a) Soft sealing
- b) Metallic sealing
- c) Double soft sealing with purge gas chamber
- d) Metallic and soft sealing



产品系列 • Product Range

应用于钢铁行业的阀门

Valves for the Iron and Steel Industry

应用于石化及精炼行业的阀门

Valves for the Petrochemical and Refining Industries

应用于能源及环保行业的阀门

Valves for the Energy Industry and Environmental Protection

应用于玻璃工业的阀门和设备

Valves and Equipment for the Glass Industry

优质的客户服务

Our Service for Your Company

如需了解更多的产品和公司信息，请联络：

德恩杰阀门技术有限公司上海代表处

上海市浦东新区东方路989号中达广场
2407室

邮编：200122

电话：(+86 21) 6867 0980

传真：(+86 21) 6876 0232

电子邮件：D.Ye@zjtechnologies.cn

Z & J Technologies GmbH

Bahnstraße 52
D-52355 Düren, Germany

P.O. Box 10 25 65
D-52325 Düren, Germany

Tel.: (+49) 2421 691 - 0

Telefax: (+49) 2421 691 - 200

E-mail: postoffice@zjtechnologies.de

www.zjtechnologies.de