

ZIMMERMANN & JANSEN



RACÓ

**热风阀
只需少量冷却**

**Hot Blast Valves
with Minimum Cooling**



热风阀

Hot Blast Valves

热风阀设计特点:

- 焊接式结构
- 阀体、阀帽(未经冷却)、阀板采用最佳隔热设计, 生产工艺过程温度损失最小
- 由多种材料组成隔热层
- 最佳隔热设计, 仅阀座和阀板需要冷却
- 特殊设计的冷却水通道提供最佳冷却
- 双面密闭, 阀板浮动于中间
- 阀门的驱动可根据用户的要求设计(如: 电动、液动、气动、手动等)
- 压力等级可达PN 6
- 操作温度可达1650 °C (3000 °F)
- 公称直径可达3000 mm (120 inch)
- 其它尺寸或操作条件按订货要求
- 德国和其它国家的专利在申请中

设计保证:

- 大幅度地减少冷却水的用量(包括在紧急操作时)
- 通过增加隔热层和减少热应力而延长了阀门寿命
- 冷却水通道中无杂质残留
- 优化设计使阀门维修极为方便
- 由于以下两个原因降低了运行成本:
 - 热损耗降低
 - 所需要的冷却水用量减少

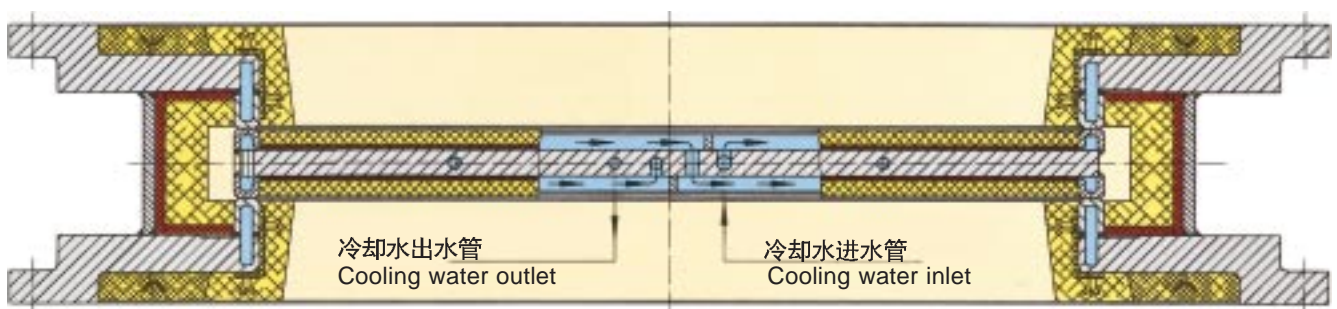
Design Features of Hot Blast Valves:

- Fabricated construction
- Minimizing of heat loss of process temperature due to optimized thermal insulation of body, bonnet (uncooled) and paddle
- Thermal insulation comprising various materials
- Optimization of thermal insulation, allowing for water cooling of only the body seats and paddle
- Special design cooling water passages provide optimum flow
- Sealing in both directions, floating paddle design
- Valve actuation in accordance with customer's requirements (man./electr./hydr./pneum.)
- Pressure rating up to PN 6
- Service temperatures up to 1650 °C (3000 °F)
- Nominal diameters up to 3000 mm (120 inch)
- Other sizes or operating conditions on request
- German and foreign patents pending

This Design Guarantees:

- Considerable reduction of required quantity of cooling water (also during emergency operation)
- Extended operational life of the valve due to increased thermal insulation, reducing thermal stresses to the valve
- No deposits in cooling water channels
- Due to optimized design valve is easily maintained
- Reduced operating costs due to:
 - decreased heat loss of process temperature
 - reduction in amount of cooling water required

剖面图 / Section



只需少量冷却

with Minimum Cooling

特别适合于极端的操作条件如：

- 温度达到1650 °C (3000 °F)
- 热震
- 工作温度频繁变化
- 开闭时间短暂

热风阀的典型应用：

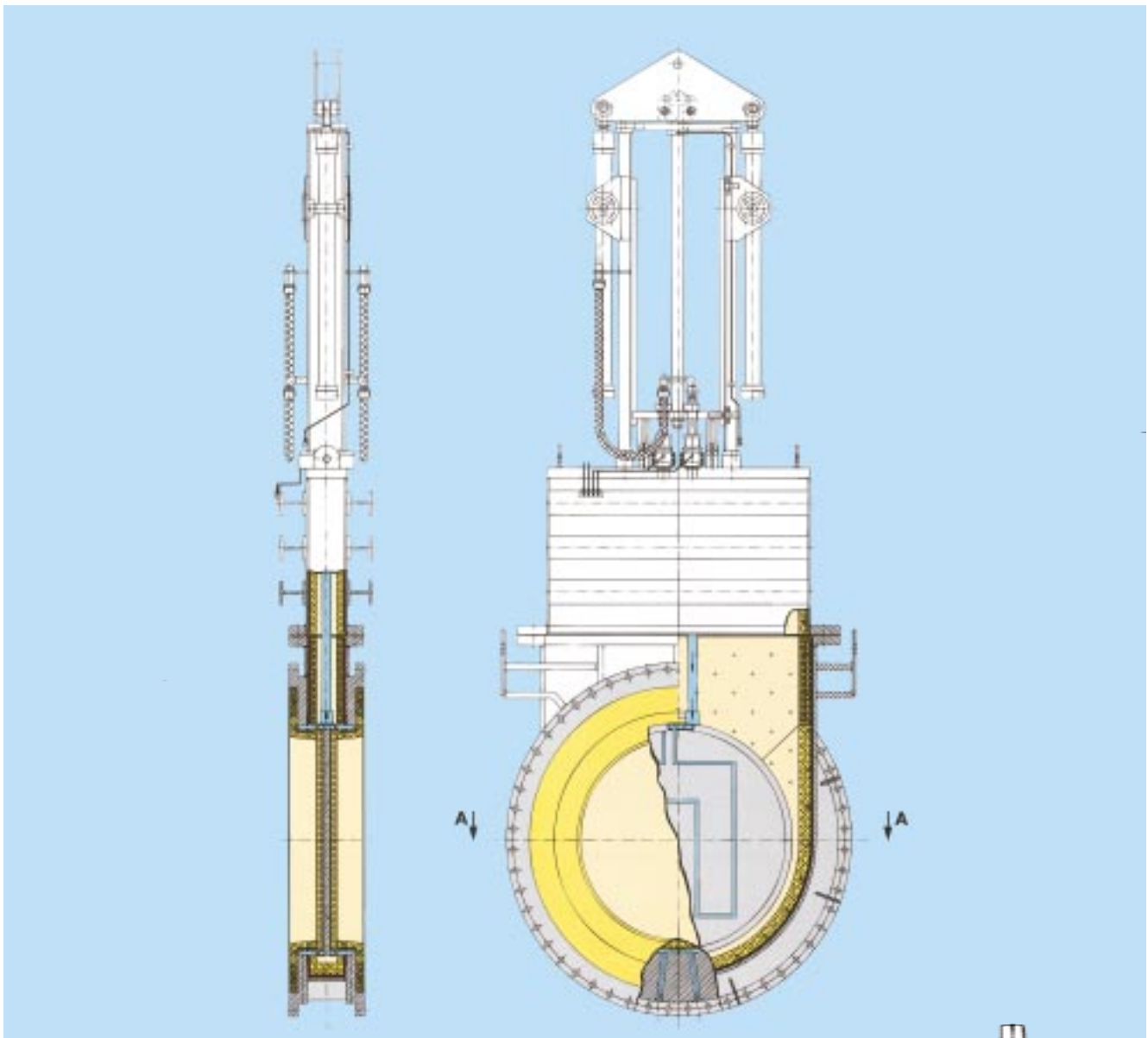
- 安装在高炉热风炉系统的热风阀
- 高炉隔断阀
- 倒流休风阀
- 混有高温固体的介质的隔断

Especially Suitable for Extreme Operating Conditions, Such as:

- Temperatures up to 1650 °C (3000 °F)
- Thermal shock
- Temperature fluctuations
- Short closing and opening time.

Typical Service Applications of Hot Blast Valves:

- Hot blast valves on blast furnace stove installation
- Blast furnace isolation valves
- Back draught valves
- Isolation of media, with entrained solids, at elevated temperature



产品系列 • Product Range

应用于钢铁行业的阀门

Valves for the Iron and Steel Industry

应用于石化及精炼行业的阀门

Valves for the Petrochemical and Refining Industries

应用于能源及环保行业的阀门

Valves for the Energy Industry and Environmental Protection

应用于玻璃工业的阀门和设备

Valves and Equipment for the Glass Industry

优质的客户服务

Our Service for Your Company

如需了解更多的产品和公司信息，请联络：

德恩杰阀门技术有限公司上海代表处

上海市浦东新区东方路989号中达广场
2407室

邮编：200122

电话：(+86 21) 6867 0980

传真：(+86 21) 6876 0232

电子邮件：D.Ye@zjtechnologies.cn

Z & J Technologies GmbH

Bahnstraße 52
D-52355 Düren, Germany

P.O. Box 10 25 65
D-52325 Düren, Germany

Tel.: (+49) 2421 691 - 0

Telefax: (+49) 2421 691 - 200

E-mail: postoffice@zjtechnologies.de

www.zjtechnologies.de